



ABOUT US

Delivering great service is what makes our customers happy.



WE'RE AN INDEPENDENTLY OWNED PROVIDER OF WASHROOM SERVICES. **WITH OVER 30 YEARS OF INDUSTRY EXPERIENCE**, WE'RE SPECIALISTS AT SERVICING WASHROOMS IN BUSY FACILITIES.

Everything we do is underpinned by delivering exceptional service that our customers can rely on. By putting service first, we help ensure the safety and wellbeing of people who experience our services every day.

From the start of our journey we wanted to challenge ourselves, and the washroom services industry more widely, to promote service, safety and sustainability. It's this commitment that enables us to understand the challenges you and your facility face and ensures we provide the right service solution to best meet your needs.



THE SERVICE SOLUTION FOR EVERY FACILITY

Our flexible approach ensures the washrooms we service are always clean, hygienic and serviced to the highest standards.



CHOOSING **THE RIGHT WASHROOM SERVICE PROVIDER** IS AN IMPORTANT DECISION.

If you're a facilities manager of a busy commercial office block, an estates management team for a large stadium, or a cleaning company looking for a washroom service partner; we have the service solution for you.

We know managing multiple hygiene disciplines in a busy facility can be challenging. When you become a Simply Washrooms customer you'll have the confidence that your washrooms will always be serviced to the highest standards. The result is a more hygienic and healthier washroom.



OUR WORLD

**WE SPECIALISE IN
HYGIENE SERVICES**
AND WORK ACROSS
AN EXTENSIVE RANGE
OF SECTORS.



COMMERCIAL BUILDINGS



FM/CLEANING COMPANIES



HOSPITALITY



SPORTS AND LEISURE



HEALTHCARE



EDUCATION



We understand every sector has its own unique set of challenges and demands.

Whether it's the drive to run a sustainable and cost-effective commercial office block, the importance of infection control and air quality management in healthcare environments, or delivering a discreet and reactive service that can meet the rigorous demands of a busy university; washrooms are challenging environments.

It's this understanding and our commitment to delivering exceptionally high levels of service in an environmentally responsible way that sets us apart from our competitors.

These reasons, and more besides, are why our customers choose us.



We serve a simple cause; to understand the challenges our customers face, so we can better solve them.

“ ”

YOUR SIMPLY WASHROOMS JOURNEY

IF IT'S TIME TO REVIEW YOUR CURRENT WASHROOM SERVICES CONTRACT, OR PERHAPS YOU REQUIRE THIS SERVICE FOR THE FIRST TIME, **SPEAK TO US HERE AT SIMPLY WASHROOMS.**



TAILORED QUOTES:

Following a thorough assessment of your site by one of our workplace hygiene specialists, you'll receive a tailored quote with transparent contract terms and importantly, no hidden costs.



TAILORED SERVICE PLANS:

We'll work closely with you to develop a service plan that best meets your needs and one that's tailored to your facility's individual requirements.



OUR FRIENDLY SUPPORT TEAM:

Will talk you through your service plan and upcoming installation. They will also introduce you to your field service team.



OUR PROFESSIONAL FIELD SERVICE TEAM:

Are well-presented, courteous and punctual. All are DBS checked and employees of Simply Washrooms – we never use agency staff. This means you really get to know us and importantly, we get to know your site.



SUSTAINABLE DRIVING PRACTICES:

We carefully plan all our service routes with the latest route planning software to ensure efficiency. Our service fleet is also fitted with fuel analytic technology to optimise our fuel consumption and reduce our carbon emissions.



WE'RE FLEXIBLE:

Should you wish to increase your service frequency, just let us know. We offer an extensive range of service plans to suit any type of facility from large public buildings to small satellite offices.



IT'S INSTALLATION DAY:

Our experienced and professional fittings team are fully trained in the installation of our full range of services. Our aim is always to install our services with minimal disruption to you and your facility and if required, we can do your installation out of working hours.

NOW WE'RE UP AND RUNNING

OUR PROFESSIONAL FIELD SERVICE TEAM WILL SERVICE YOUR SITE AT THE REQUESTED FREQUENCY.



WE'RE RELIABLE:

Our specialist operating software guarantees we'll always be with you on the right day at the right time. No uncertainty, no missed service. We also undertake quality assurance checks on our sites to ensure our service standards are always maintained.



NEED A HEADS UP?

Ahead of your scheduled service we can drop you an email with the exact time we'll be with you, which member of the team will be visiting, and their vehicle details.



SUSTAINABLE SERVICE:

All the waste we collect is taken to our transfer station where it's sorted for recycling and recovery. The waste we collect never goes to landfill, helping you, and your business, achieve your environmental goals.



DISCREET SERVICE:

We'll complete our service without any disruption to your working day. Should you require us to service outside of working hours, this is not a problem.



LINER SERVICE:

We keep our sanitary bins in situ and clean and sanitise the bin and change the liner at every service. This way of servicing is efficient, discreet and minimises disruption.



REACTIVE SERVICE:

With a simple call or email to our support team we can arrange additional services during busy periods. Our real-time tracking system enables us to send a driver to you quickly to get the job done.



PROOF OF SERVICE:

If required, after each visit we can provide an electronic proof of service that will be sent straight to you. This will come directly from our field service team member who is servicing your site.



ALWAYS HERE:

If you ever need to speak to us about anything to do with your service plan, a member of our friendly support team is always available. No call centres, no long waits. We aim to resolve all enquiries as quickly as possible.

OUR ENVIRONMENTAL JOURNEY

HYGIENE WASTE PRODUCTS ARE AN ESSENTIAL PART OF OUR EVERYDAY LIVES. BUT DISPOSING OF THEM IS INCREASINGLY BECOMING AN ENVIRONMENTAL AND FINANCIAL BURDEN FOR BUSINESSES.

Typically, hygiene waste is collected and sent to landfill sites around the country where it takes centuries to decompose. With landfill space rapidly running out and businesses facing increasingly higher costs for doing so, it's simply not a sustainable way to deal with our hygiene waste.

HERE AT SIMPLY WASHROOMS WE DO THINGS DIFFERENTLY.

We believe in changing the way the washroom services sector approaches sustainability and importantly, deals with its hygiene waste. It's a subject that's close to our hearts. We made a commitment when we started that we would never send any of the hygiene waste we collect to landfill. And it's a promise we've kept.



Each year around
THREE BILLION
disposable nappies
end up in landfill
sites across the UK.



Sanitary waste
generates more than
200,000 TONNES
of waste a year.



THE JOURNEY YOUR WASTE TAKES



Our field service team collects the hygiene waste from your site.



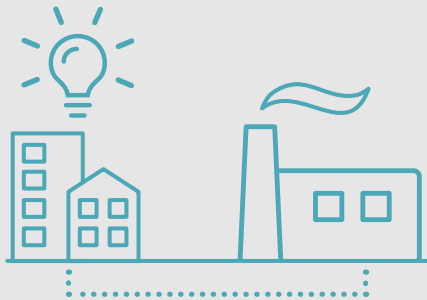
The waste is taken to our transfer station where it's sorted for recycling and recovery.



It's collected and sent to local energy from waste (EfW) plants.



The hygiene waste we collect never goes to landfill.



Your hygiene waste is turned into a renewable fuel source which is used to power our homes, hospitals, schools and businesses.



Any residual waste from the EfW process is used as aggregate in the construction industry.

Our commitment to the environment and disposing of all the hygiene waste we collect in an environmentally sustainable way minimises our environmental impact and helps you, and your business, achieve your environmental goals.



T: 01992 575563

E: info@simplywashrooms.com

W: www.simplywashrooms.com

 [@SimplyWashrooms](https://twitter.com/SimplyWashrooms)